



SWIFT TRAWLER 54

SWIFT TRAWLER 54

INTRODUCTION	EXTERIOR	INTERIOR	INTERIOR	INNOVATIONS
Specifications	Key points	Salon	Owner Cabin	Innovations
Side Elevation	Flybridge	Galley	Owner Cabin - En suite	TECHNICAL
Layout	Flybridge - Dimensions	Dinette helm area	VIP Cabin	Mooring kit
Key points	Aft cockpit	Helm	Port Guest Cabin	Technical equipment
	Aft cockpit - Dimensions	Main deck - Dimensions	Day Head	Air Heating
		Main deck - Headroom	Lobby	Air Conditioning
			Lower deck - Dimensions	Climate Control System
			Lower deck - Headroom	Audiovisual
				Air draft
				Performances

*Vous pouvez revenir à cette page à n'importe quel moment. Cliquez sur le logo Bénéteau, en bas de page.
You can return to this page anytime. Click on the Bénéteau logo, at the bottom of the page.

SPECIFICATIONS

PROVISIONNAL SPECS

MAIN SPECIFICATIONS	DATA	
Length Overall (Incl. Bathing platform & stemhead)	17,13m	56'2"
Hull Length	14,85m	48'9"
Overall Beam	4,95m	16'3"
Water Draft (full load)	1,142m	3'9"
Air Draft (Std)	6,54m	21'5"
Air Draft (Opt. T-Top)	6,58m	21'7"
Light Displacement	21,518 kg	47,426 lbs
Berths (+ opt single crew berth)*	6+1*	
EC Certification	B 14 / C 14	
Architect	Dixon Yacht Design	
Designer	Andreani Design	

CAPACITY



Fuel
2 x 1720 L
2 x 454 US gal



Water
2 x 400 L
2 x 106 US gal



Water hot tank
80 L
21 US gal



Black water tank
170 L
45 US gal

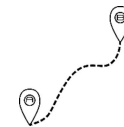
MOTORISATION / PERFORMANCE



2 X 550 HP



Speed Max
20 kts



Autonomy
700 nm @ 9 knots
(*10% fuel reserve)

*10% fuel reserve, zero sea state, clean hull & drivetrain

INTRODUCTION





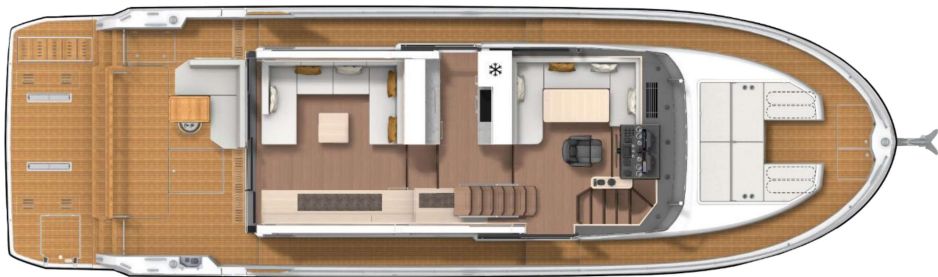
OPTION T-TOP



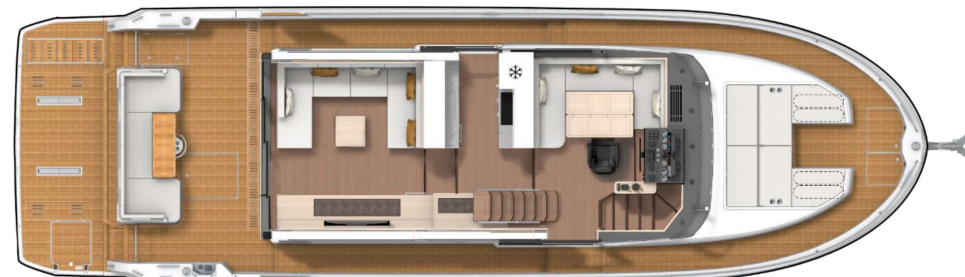
OPTION T-TOP + PACK SILENT BOAT



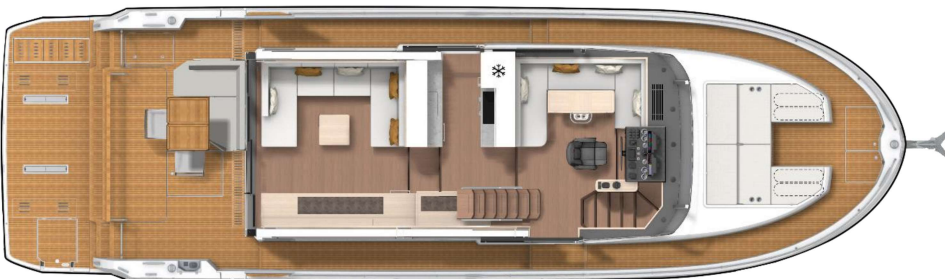
STANDARD BOAT L-SHAPE SEAT AFT COCKPIT



OPTION CREW CABIN U-SHAPE SEAT AFT COCKPIT



UPGRADE FOLDING TABLE



UPGRADE FOLDING TABLE DEPLOYED



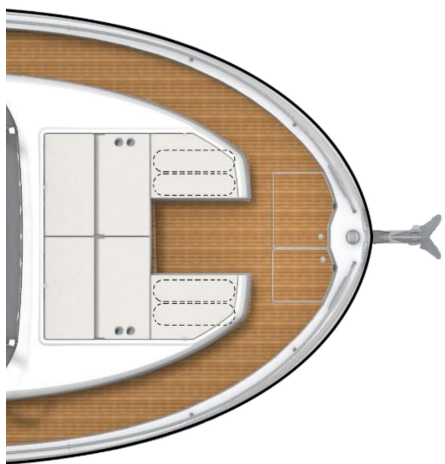
STANDARD VERSION - EASY LOAD LAZERETTE



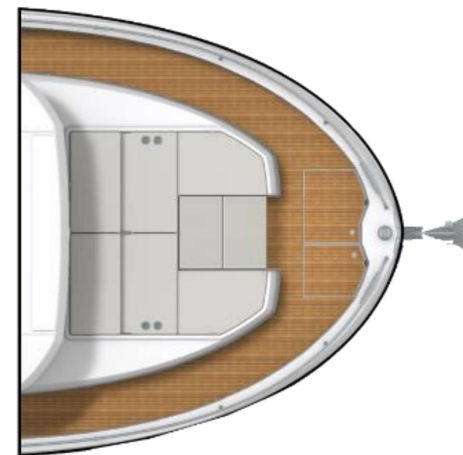
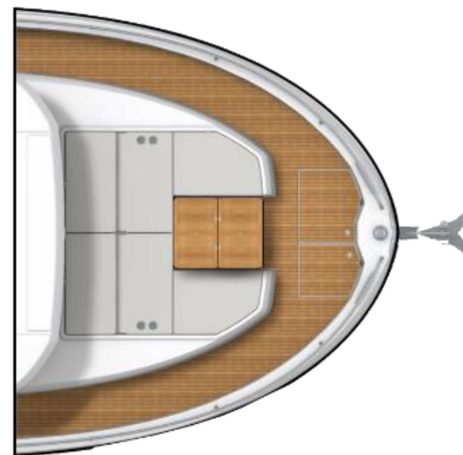
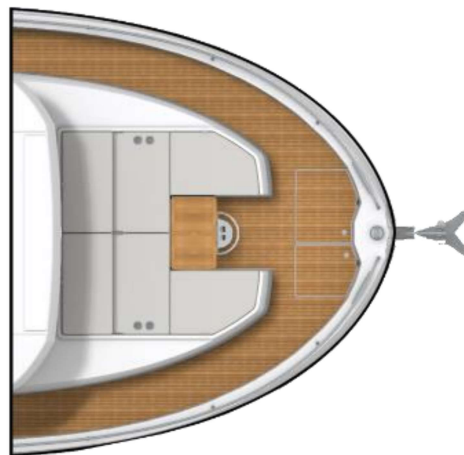
OPTION CREW CABIN



STANDARD VERSION



OPTION ELECTRIC TABLE



EXTERIOR

- « Terrace to the sea » cockpit
- Safe & Easy circulation
- Easy load lazarette
- Flybridge kayak & paddleboard storage
- Foredeck sunpad with dinette seat conversion and fender storage
- 400 kg Tenderlift

INTERIOR

- Separate relax lounge seating area and dinette seating
- Raised « passagemaker » dinette / berth next to lower helm
- Helm and galley sidedoors : easy circulation
- « Architectural » flybridge stairs
- Ergonomic and well appointed galley
- Full beam aft owner cabin
- Bathrooms with separate shower cubicle

EXTERIOR



Exterior - Key Points

Spacious flybridge area

Panoramic
wheelhouse
windows

Wood slat
fashionplate

360° all around glass

Sunpad with dinette
seat conversion and
stowage

Many opening
portholes

Exterior - Key Points



Protective pulpits

Large cockpit gates

Transform bathing steps

Hydraulic swim platform with adaptive dinghy chocks

Swim stairs with swimming pool handles

Lateral wheelhouse sidedoor

Sidedeck "windjammer" door

Port & Starboard bulwark gates

Exterior - Flybridge

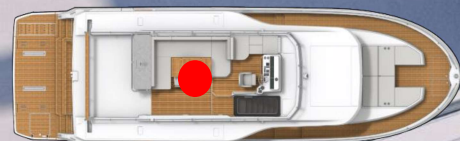
Wetbar
(sink, Texan grill, fridge, waste bin)

Pilot station with pilot and copilot
seat transform into a banquette

Folding table for up to 8
people

15 m² Overall
flybridge floor area
6m² Aft flybridge
space

Large access hatch



Exterior - Flybridge

Compass

Steering wheel

Switches

Sleipner Thruster(s)

Autopilot

Fusion head unit

Searchlight control

Engine rev gauge

Windshield

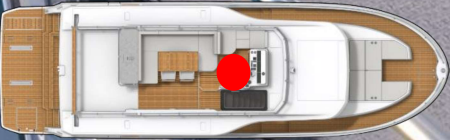
Throttles

Cummins joystick

Trim tab control

VHF handset

2 Raymarine screens 12" or 3 x 16"



Exterior - Flybridge

Flybridge table for up to 8 people

Protective handrails and pulpits

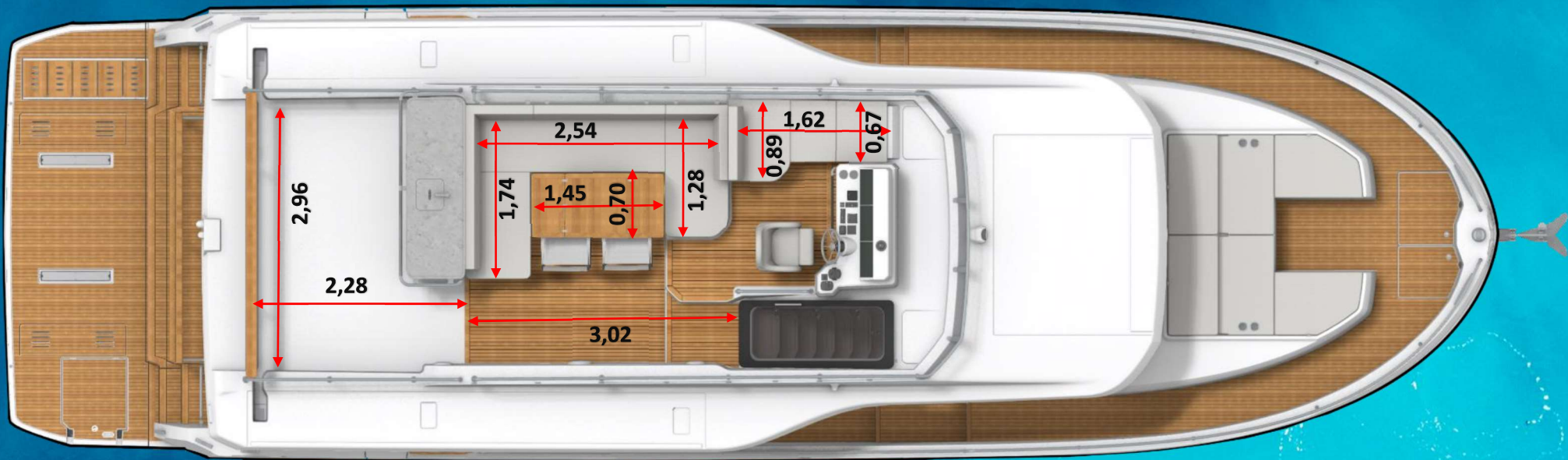
Icemaker (option)

Wetbar - Texan grill, sink, fridge, waste bin, stowage

Space for 2x 8 person liferafts



Exterior - Dimensions



Exterior - Aft cockpit

Large aft bay

Standard L-Shape seating
(5 to 6 people)

Rope storage

Large aft door

10 m² Aft cockpit floor space



Exterior - Aft cockpit

Easy load swivel davit

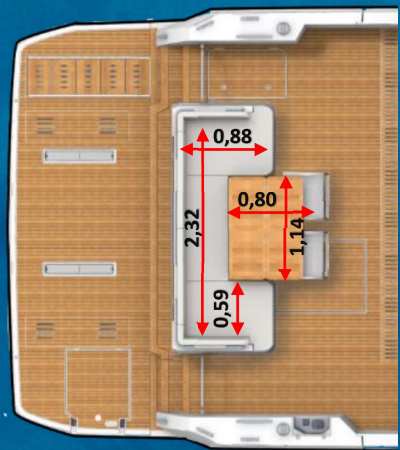
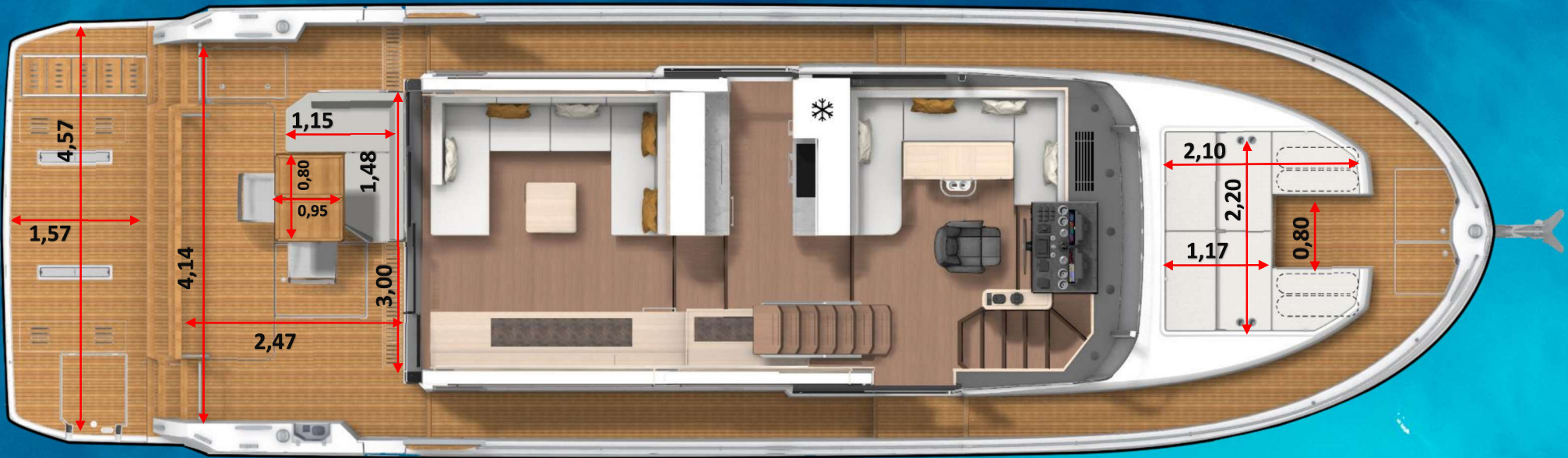
Paddleboard rack

Easy load lazarette

Easy load swivel davit



Dimensions



OPTION CREW CABIN U-SHAPE SEAT AFT COCKPIT



MAIN DECK

Main deck - Salon

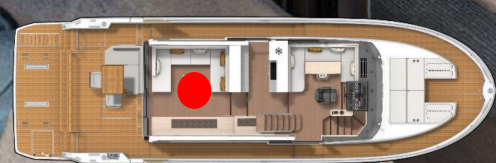
Galley with plenty of storage

Illuminated decor panel

Relax U-shaped salon seating

Architectural Stairs

Large patio door



Main deck - Salon

Handrails

Wood venetian blinds

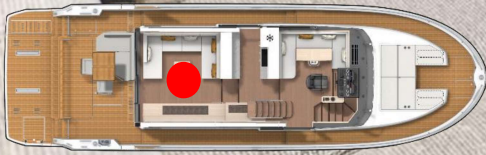
50" Pop-up TV

Severy unit, crockery glassware

Illuminated wine rack

Wine chiller (option)

Additional drawer fridge (option)



Main deck - Galley

Sidedoor

Overhead lockers

Full height fridge freezer
Fridge 193 L / 51 US GAL
Freezer 78 L / 21 US GAL

Corian worktop

Gas (Standard)

Top loading trashbin

Sink

Gas oven (Standard)

Drawers, cupboards

Dishwasher (option)



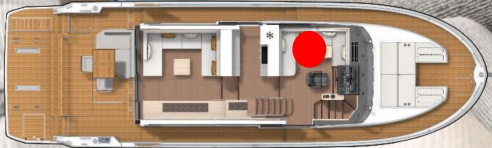
Main deck - Dinette helm area

U-shape dinette convertible into a night passage berth

Adjustable pilotseat

Starboard door

Upgrade folding table with electric leg and handrail (option)



Main deck - Helm

Compass

Steering wheel

Gauges : Fuel, helm indicator, Rev counters)

1 Raymarine 16" screen or 2x 16" screens

Engine panel

Switches

Throttles

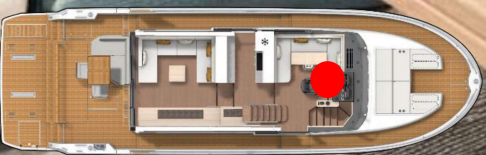
Autopilot

Sleipner stabilizer control

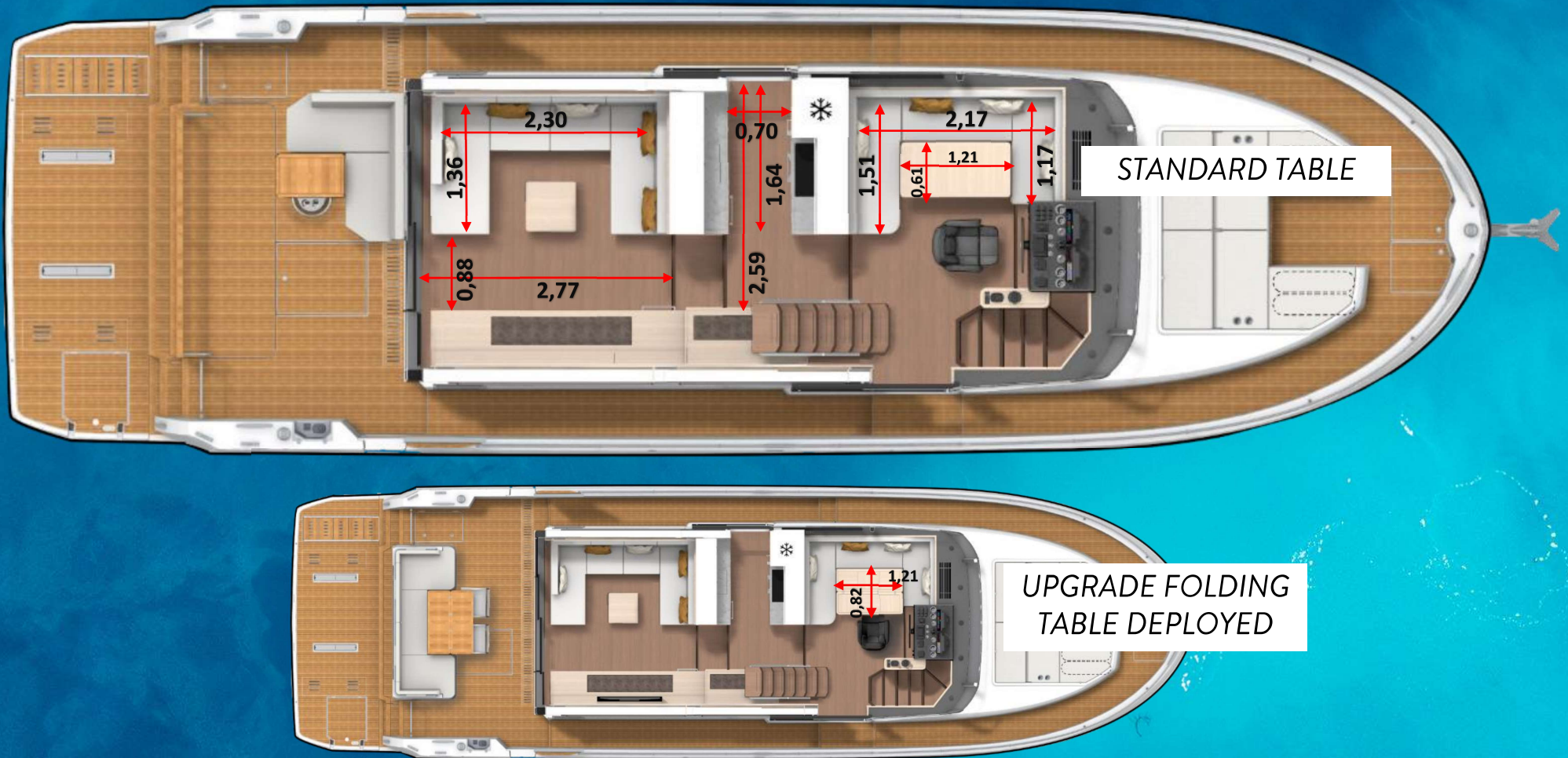
Cummins joystick

Engine key start

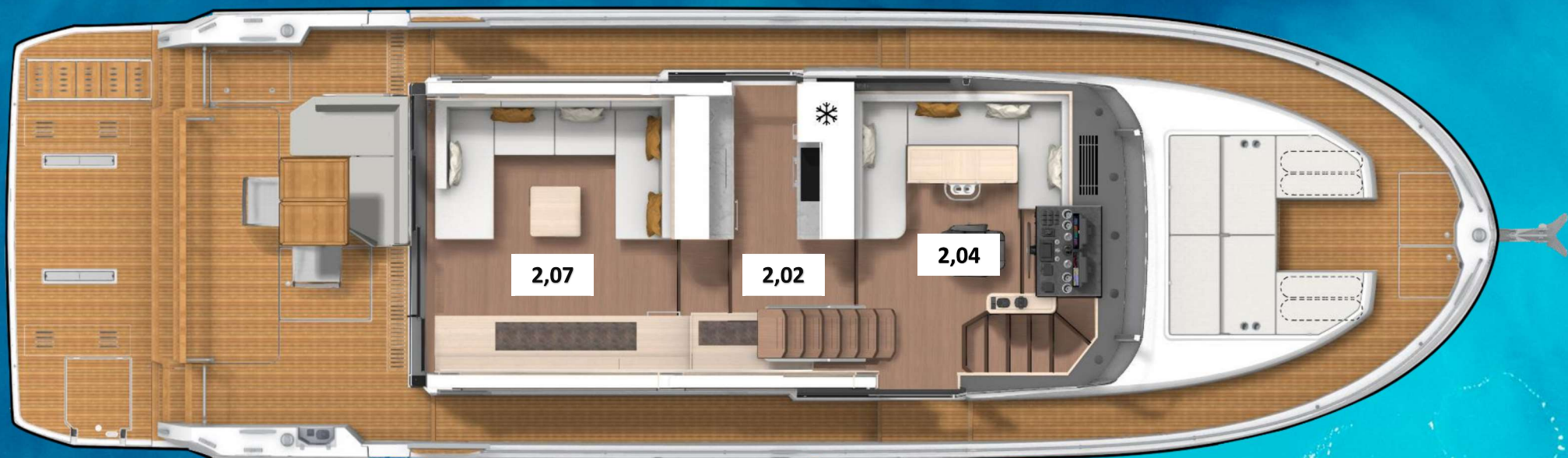
VHF



Dimensions



Headroom



LOWER DECK

Lower deck - Owner cabin

LED Stripes

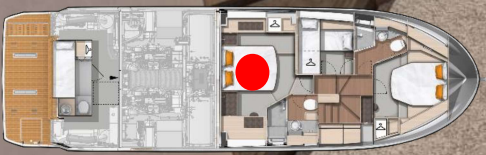
Dressing table / desk with stool

King size bed

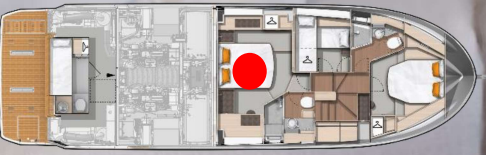
Top loading storage under mattress

Reading light

Power & USB points



Lower deck - Owner cabin



Lower deck - En-suite

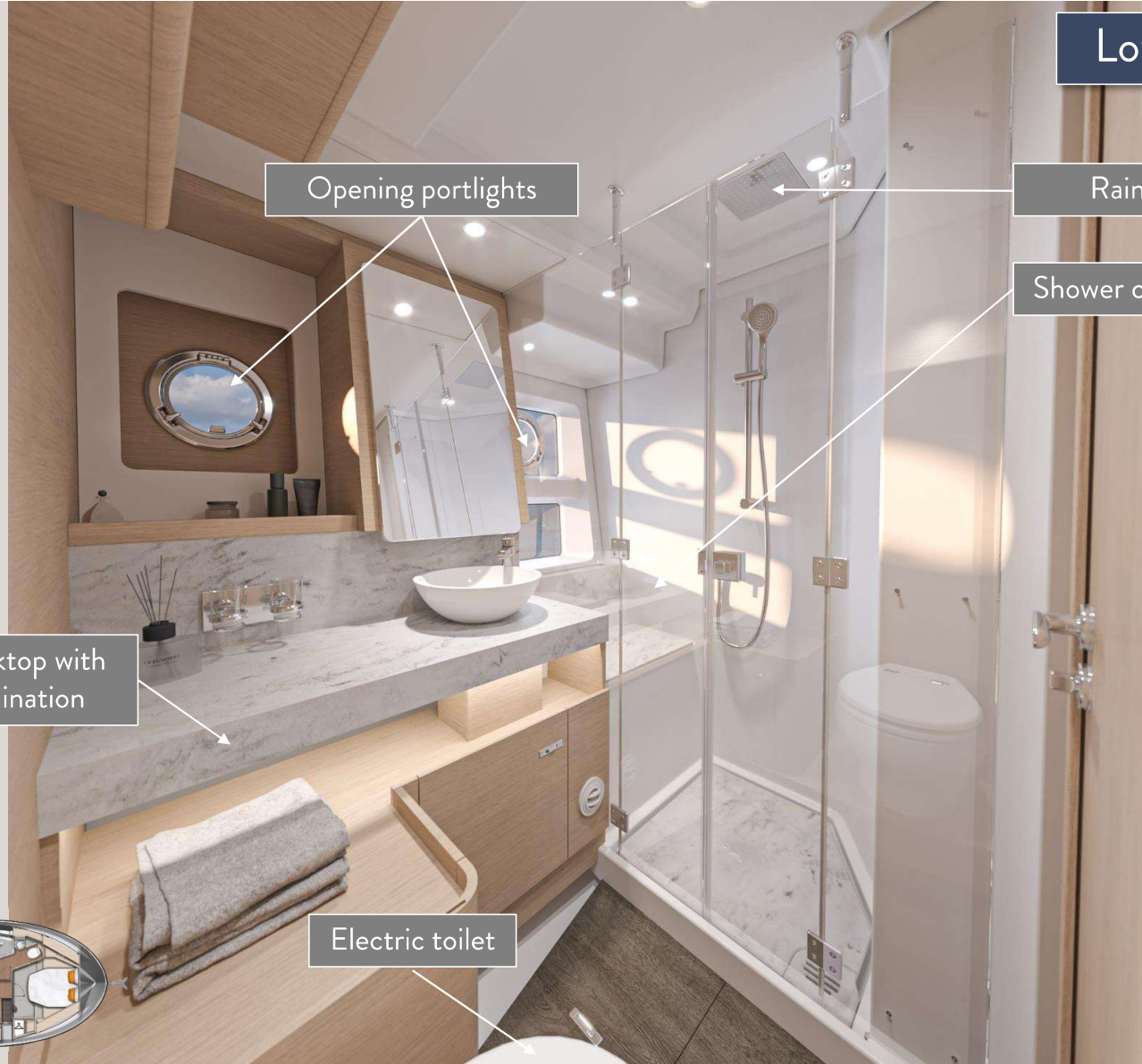
Opening portlights

Rainfall shower

Shower cubicle with seat

Corian worktop with LED illumination

Electric toilet



Lower deck - VIP cabin

Overhead lockers and cupboard

Large hull windows

Double door wardrobe

Large double bed

Top loading storage under mattress



Lower deck - VIP cabin

Overhead lockers and double door wardrobe

TV 32" (Option)

Dressing table / desk with stool

Direct access to day head



Lower deck - Port Guest cabin



3 opening portlights

Storage locker

Double door wardrobe

Storage under berth

Direct access to day head

Lower deck - Day head

2 opening portlights

Shower cubicle

Access door to VIP cabin
Access door to Port Guest Cabin

Corian worktop with
LED illumination

Electric Toilet



Lower deck - Lobby

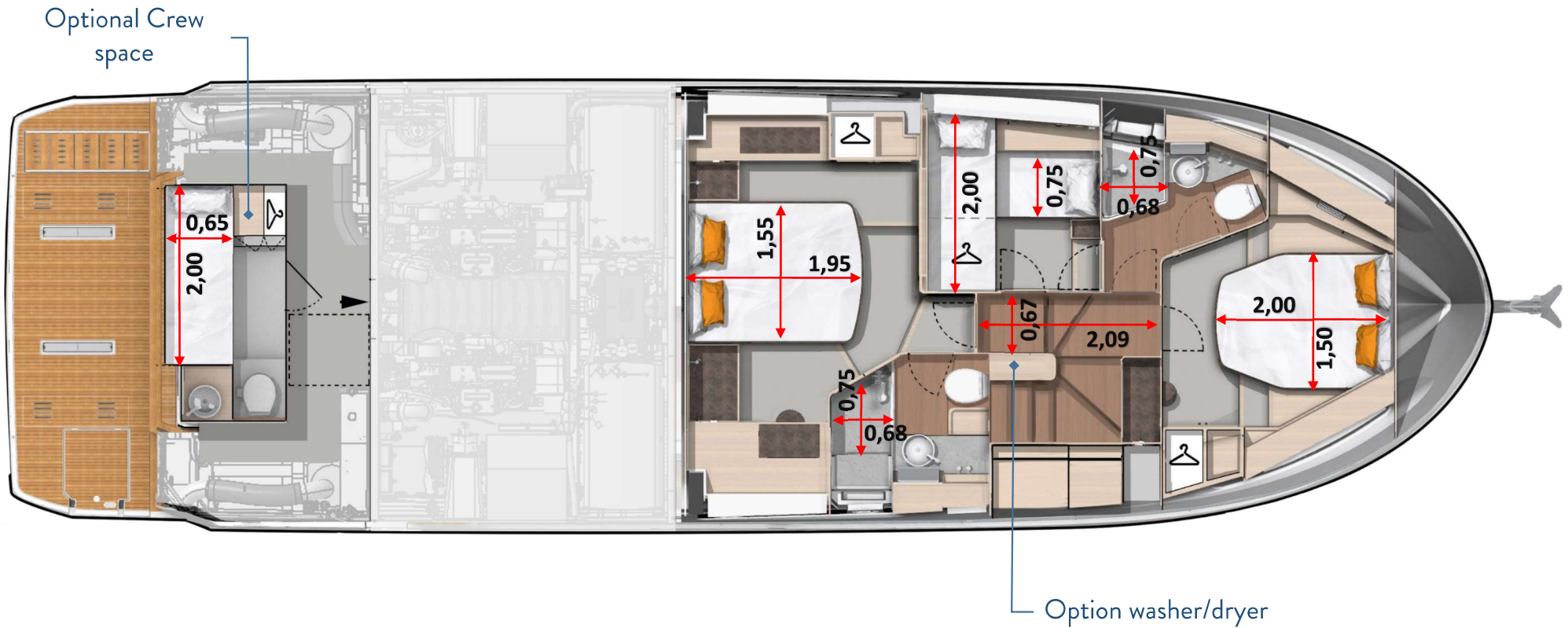
Storage cupboards for folding chairs and power point for vacuum cleaner

Linen store

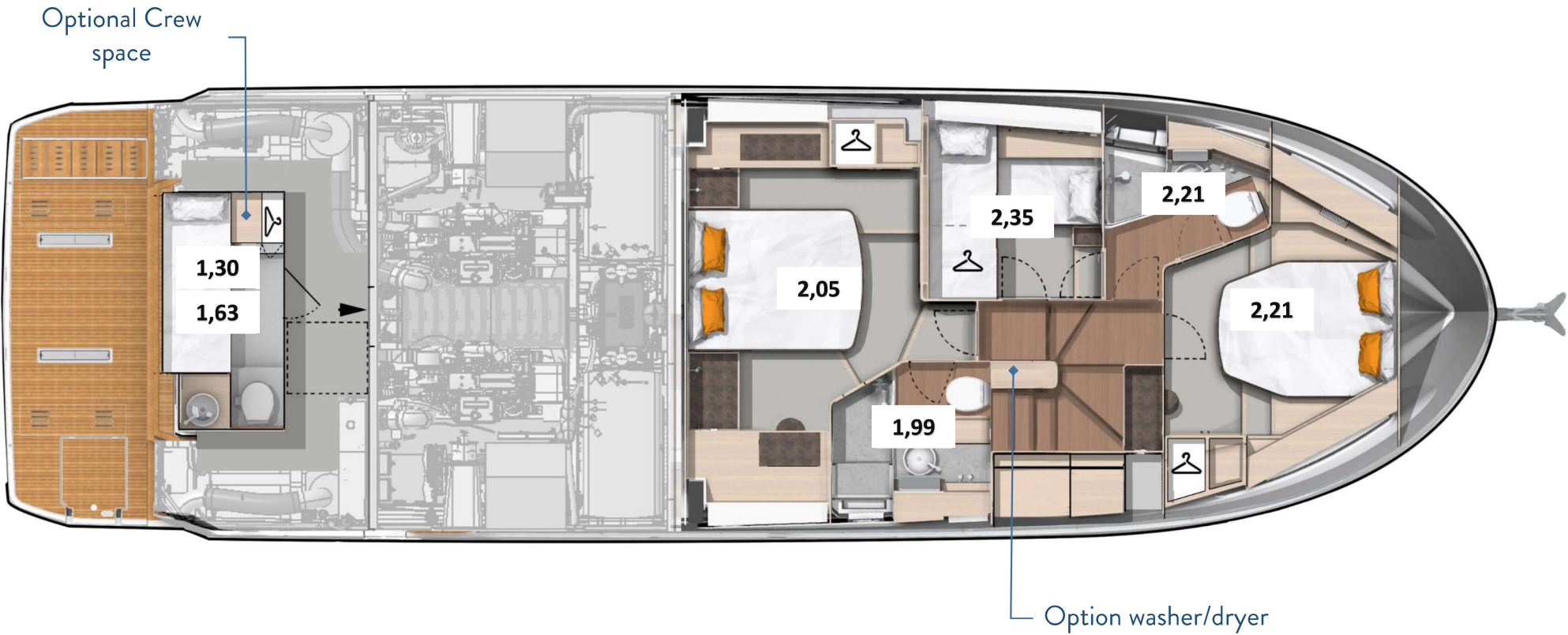
Space for washer/dryer



Dimensions



Headroom



INNOVATIONS

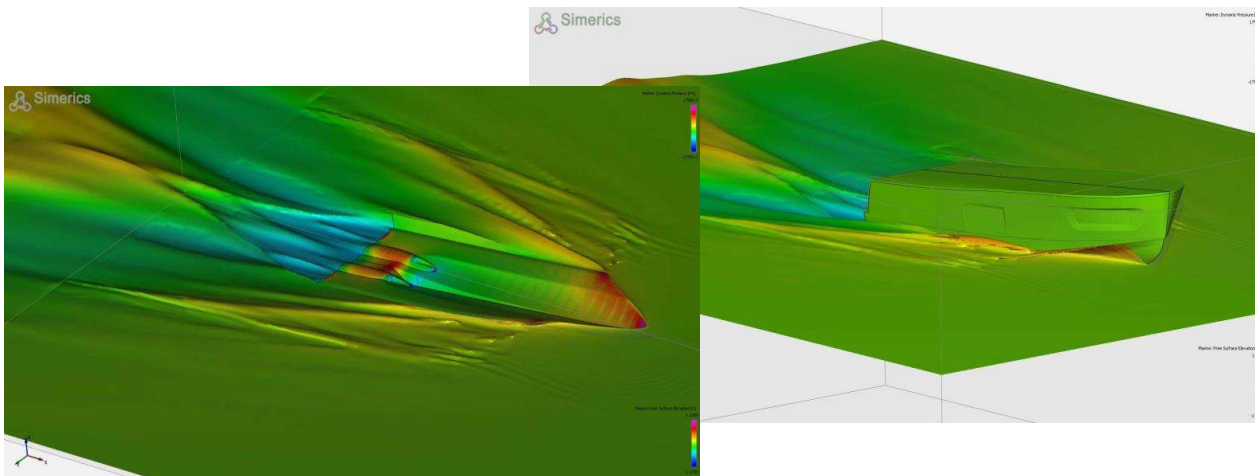


- « Fusion » hull form
- Sleipner next generation fins
- Silent boat option
- Easy circulation
- Easy load lazarette and flybridge paddleboard rack

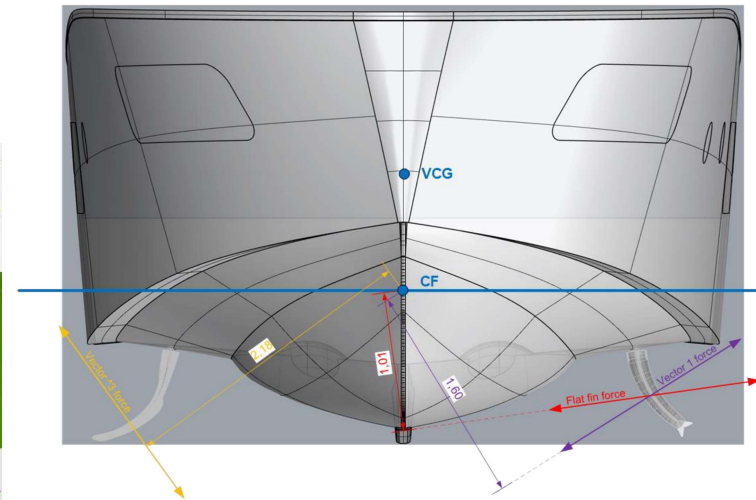
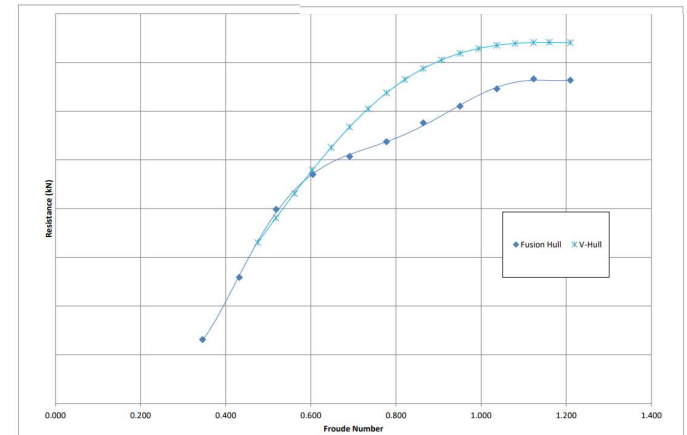
DIXON

YACHT DESIGN FUSION HULL

- The “Fusion Hull” is the culmination of a hull development that started over 20 years ago, into an efficient low deadrise soft riding semi displacement hull.
- Wide beam hull, with a softer ride into head seas than most modern “V” hull. With excellent all-round handling and comfort
- Fusion hull does not feature spray rails reducing hull noise at anchor.
- Lower drag than “V” hulls over a significant range of Froude Numbers – see graph opposite.
- Shaft drive with tunnels has relatively low draft.



INNOVATIONS



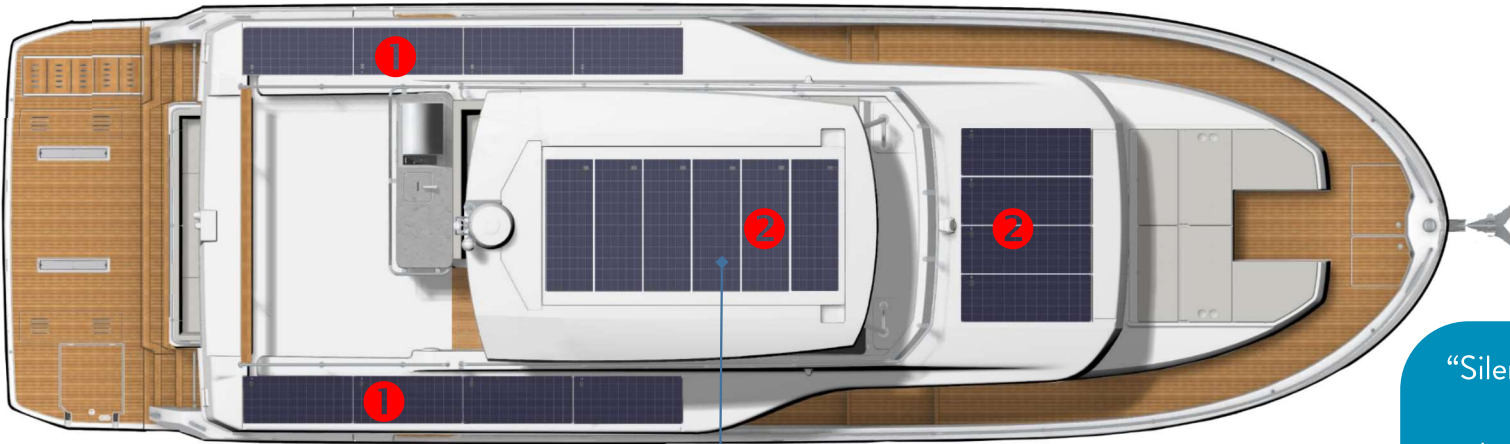
SLEIPNER ELECTRIC VECTOR FIN STABILIZER OPTION

- Stability using Vector Gen 3 fins with electric motors
- +50% less power consumption than gyro
- No wait time
- 360° fin rotation with “on anchor” mode




SLEIPNER
 Side-Power

« SILENT BOAT » OPTION



GRP in-fill panel supporting 6x solar panels in place of fabric roof

- 1. 8x 130w solar panels on flybridge side wings (-10% efficiency) = 936wp
- 2. 10x 150w solar panels on flybridge forepeak & T-Top (-10% efficiency) = 1350wp

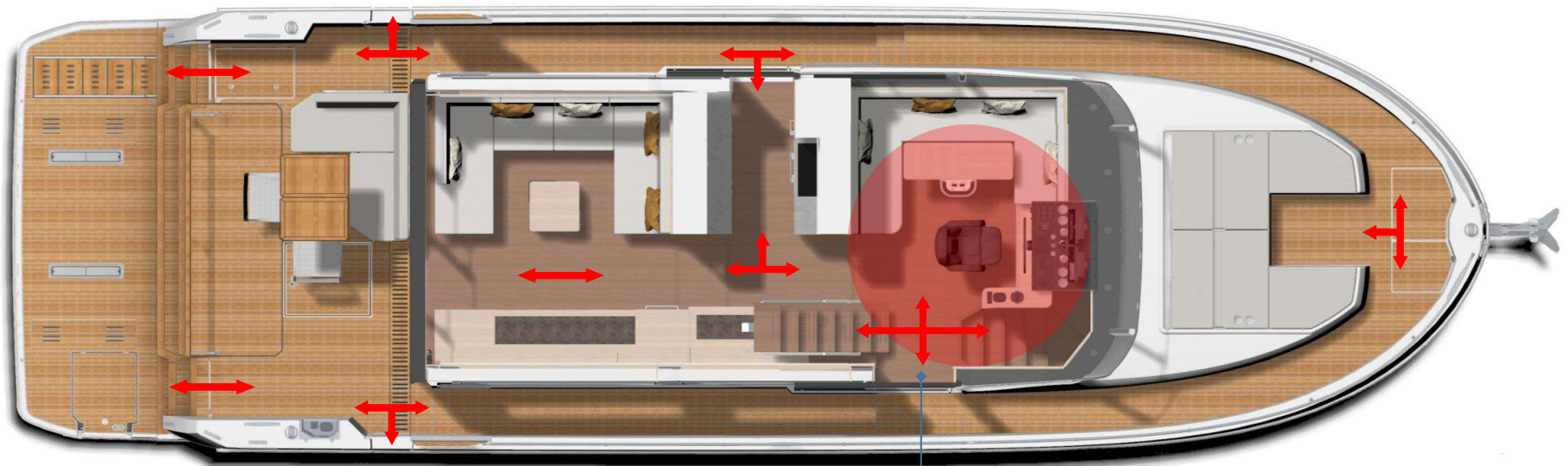
Solar panel wp (Watt Peak) = 2286wp max

Power bank: 10x Lithium batteries 24v 200 Ah (2000 Ah total)

“Silent boat” delivers up to 8 hours of on anchor autonomy* without the need to run the generator.

*Reasonable usage examples: Not running air conditioning & leaving lights, TV’s etc on in unoccupied spaces, closing patio doors etc

EASY CIRCULATION



Circulation to all parts of the boat centred around the pilot

« Easy load » Lazerette & Flybridge

“Easy Load” Lazerette on standard boat



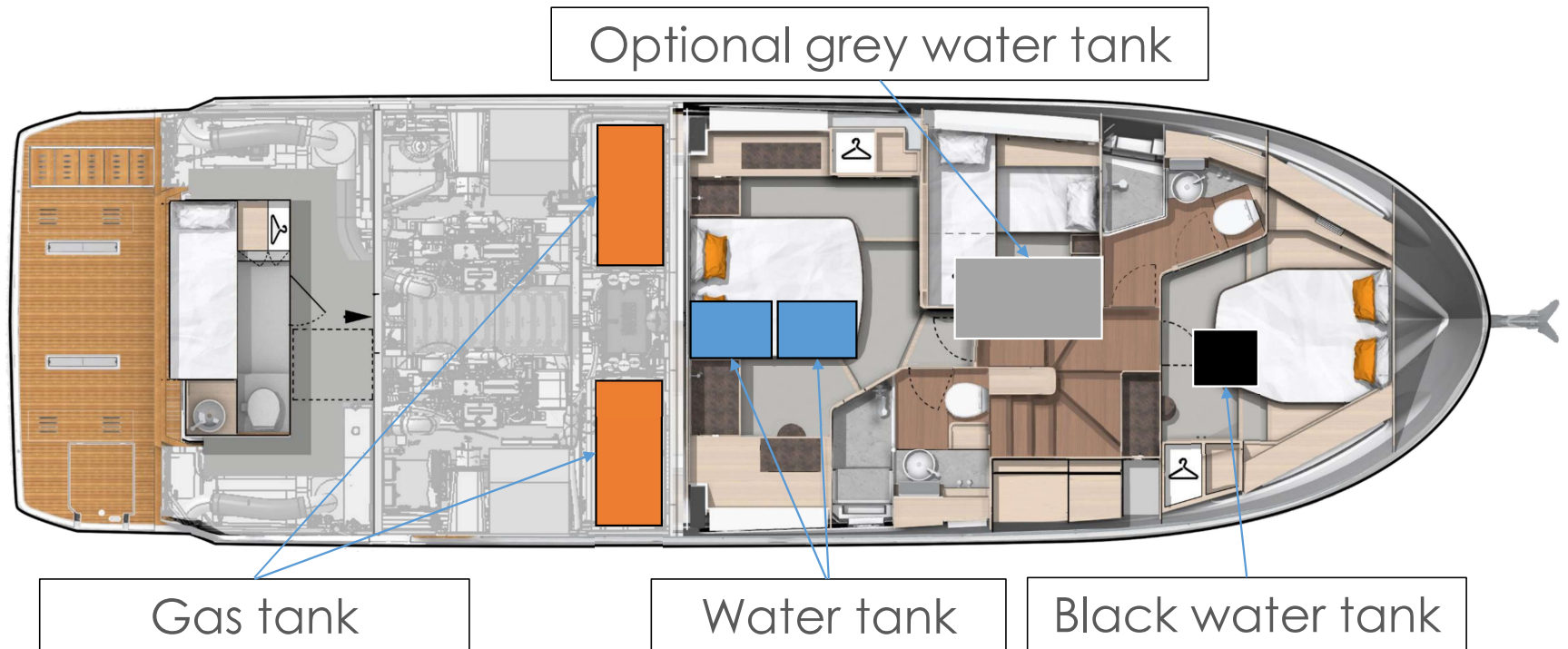
TECHNICAL



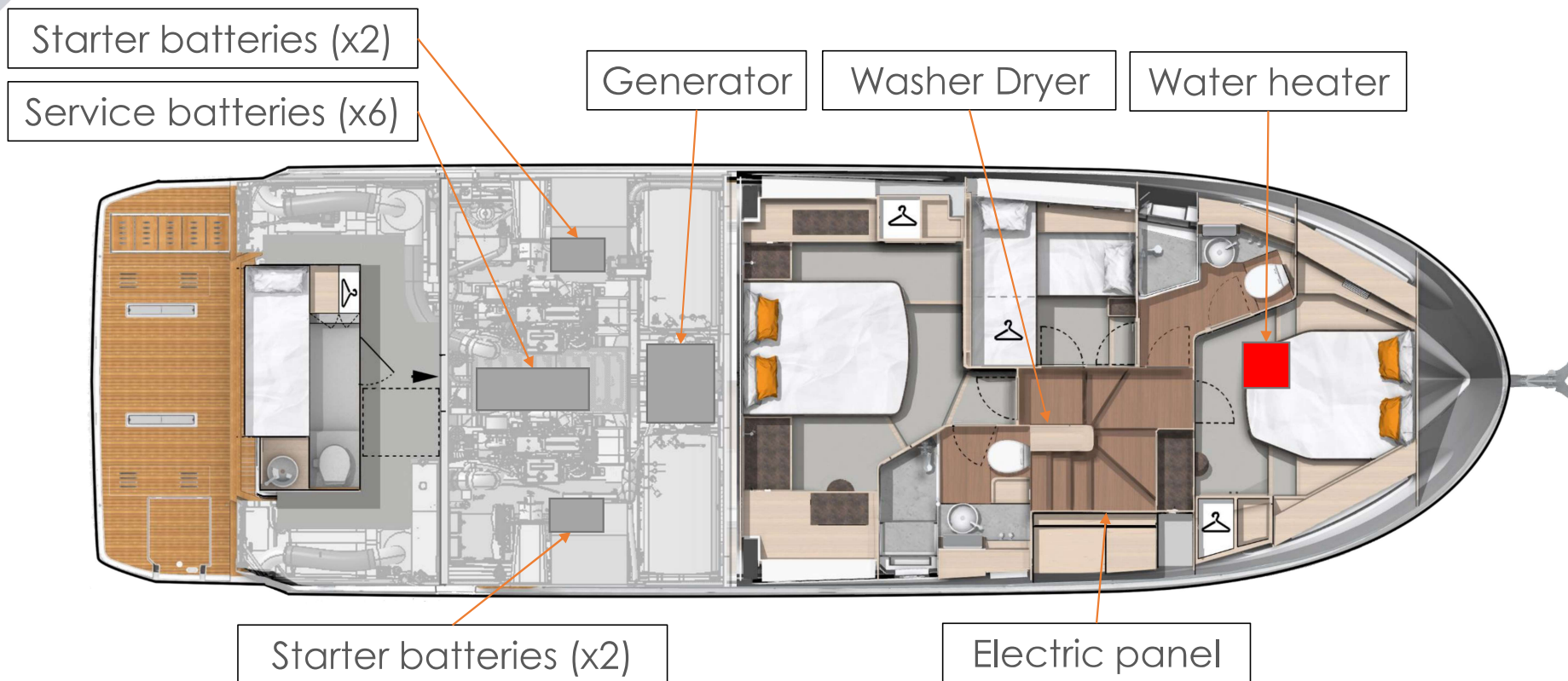
MOORING KIT

Chain length	100 m	4''
Chain diameter	12 mm	½''
Anchor weight	40 kg	88 lbs
Rope length	20 m	65'7''
Rope diameter	22 mm	7/8''
Fender dimensions with covers (8)	300 x 880 mm	12''x2'7''
Inflatable fender dimensions with covers (4)	360 x 1200 mm	12''x3'11''

TECHNICAL EQUIPMENT LOCATION



TECHNICAL EQUIPMENT LOCATION



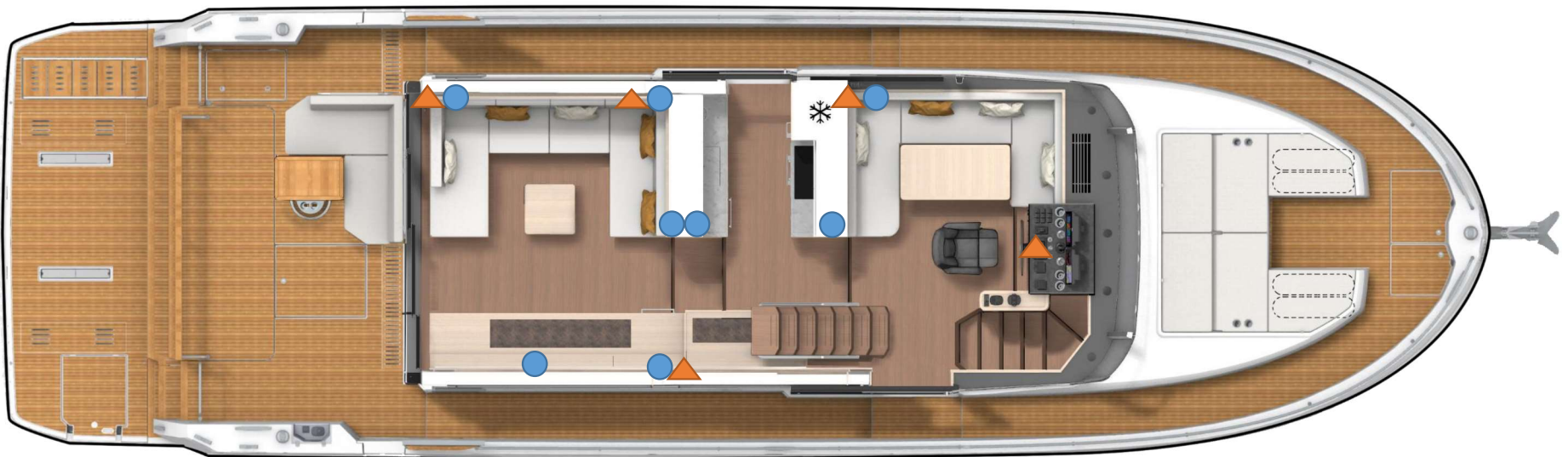
ELECTRICAL & USB OUTLETS FLYBRIDGE



● Electrical outlet

▲ USB outlet

ELECTRICAL & USB OUTLETS MAIN DECK



● Electrical outlet

▲ USB outlet

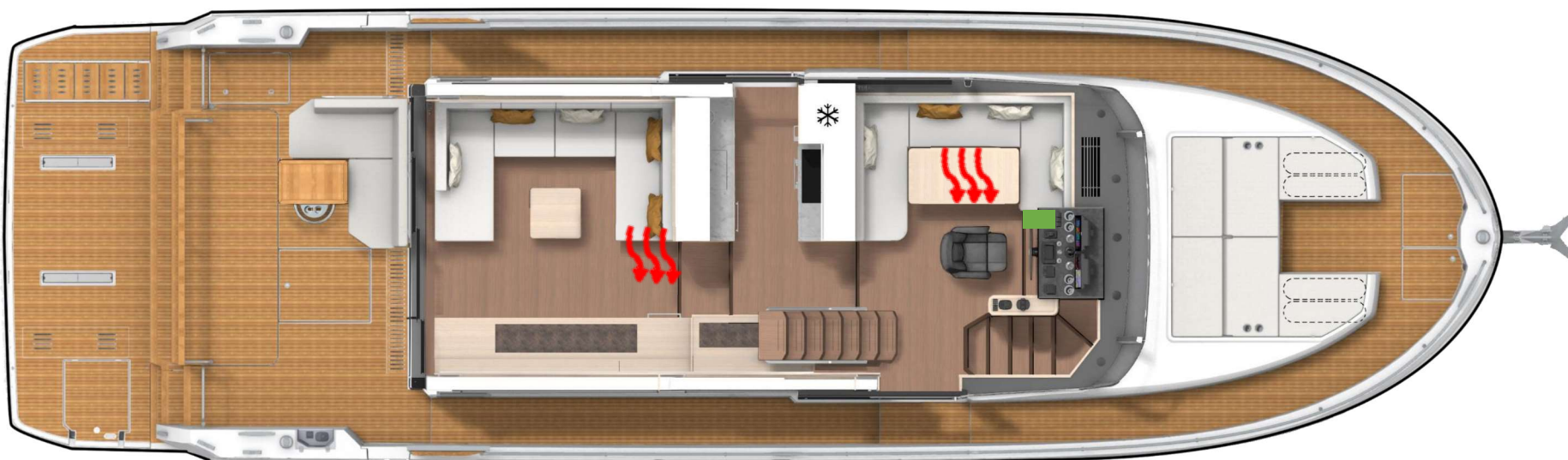
ELECTRICAL & USB OUTLETS LOWER DECK





● Electrical outlet

▲ USB outlet

AIR HEATING MAIN DECK





-  Heating vents
-  Control

TOTAL DUCTED HOT
AIR HEATING: 15KW

Diesel heating

AIR HEATING LOWER DECK

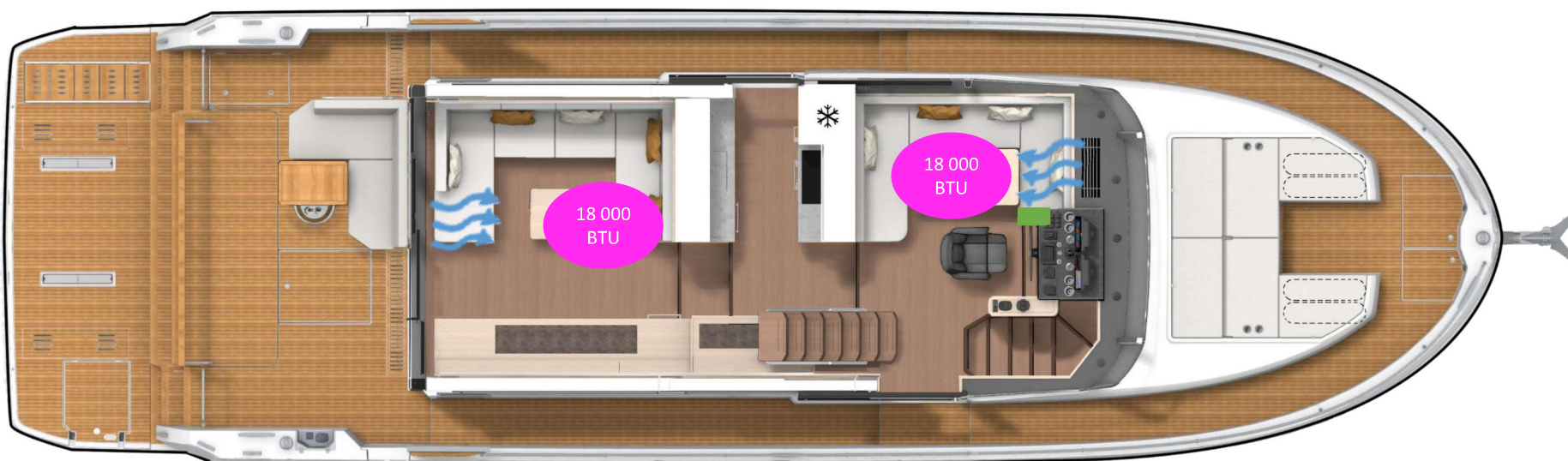


-  Heating vents
-  Control

TOTAL DUCTED HOT
AIR HEATING: 15KW

Diesel heating

AIR CONDITIONING MAIN DECK



TOTAL:
36 000
BTU

Reverse cycle air conditioning

 A/C Vents

 Control

AIR CONDITIONING LOWER DECK

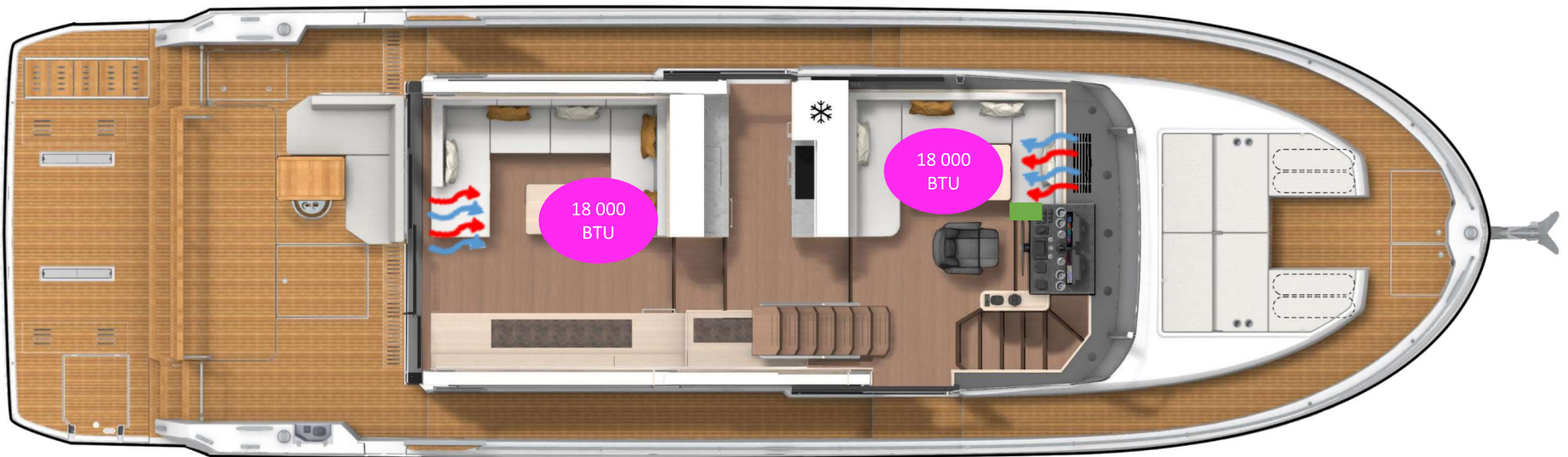


TOTAL:
24 000
BTU

Reverse cycle air conditioning

-  A/C Vents
-  Control

CLIMATE CONTROL SYSTEM MAIN DECK



TOTAL:
36 000
BTU

Climate Control System

(Reverse cycle air conditioning + inline electric heating elements)

 A/C Vents
 Control

CLIMATE CONTROL SYSTEM LOWER DECK



 A/C Vents

 Control



TOTAL:
24 000
BTU

Climate Control System

(Reverse cycle air conditioning + inline electric heating elements)



AUDIO VISUAL FLYBRIDGE - STANDARD



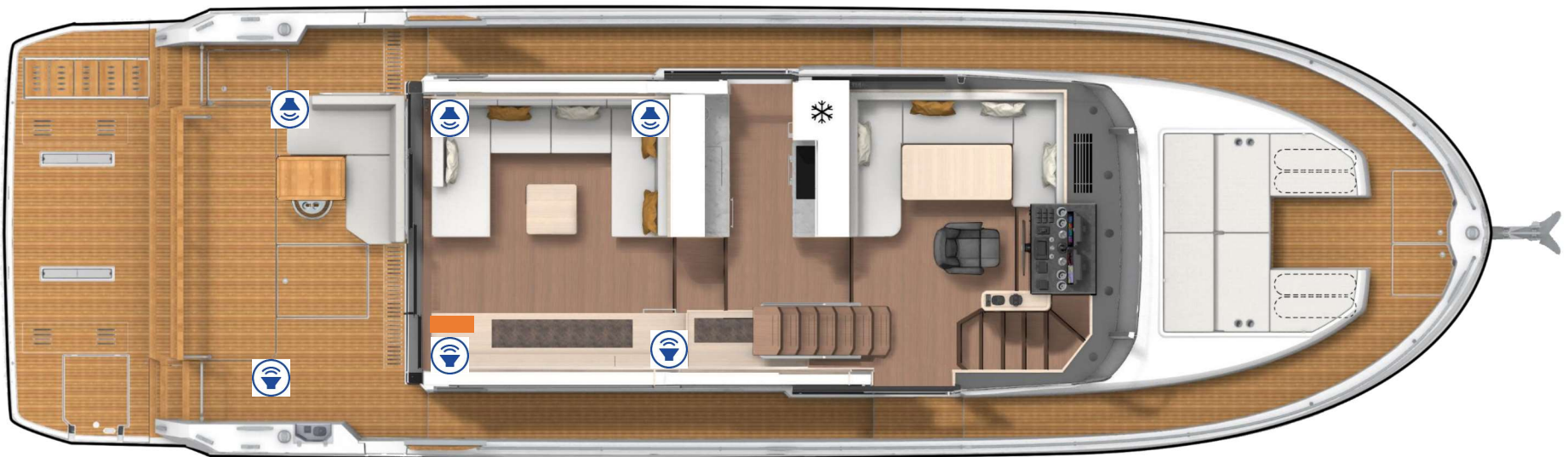
-  Speakers
-  Fusion unit


AUDIO VISUAL FLYBRIDGE - OPTION



-  Speakers
-  Fusion unit
-  Subwoofer

AUDIO VISUAL MAIN DECK - STANDARD



-  Speakers
-  Fusion unit

AUDIO VISUAL MAIN DECK - OPTION



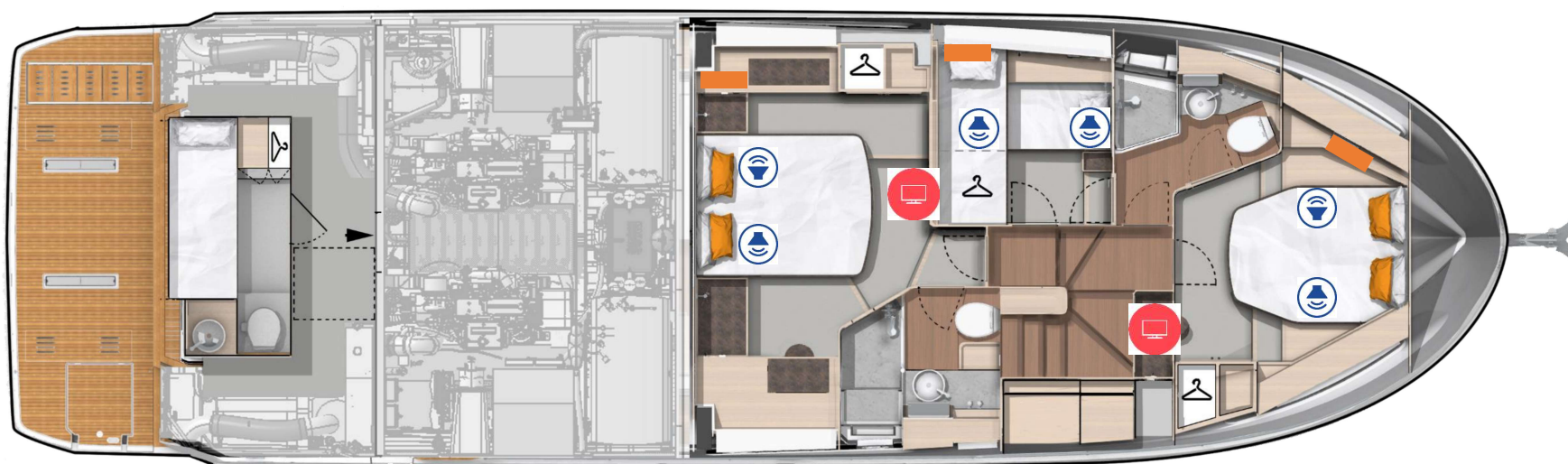
 Speakers

 Fusion unit

 Subwoofer

 TV emplacement
(MAX SALOON TV SIZE: 50")

AUDIO VISUAL LOWER DECK - OPTION



 Speakers

 Fusion unit

 TV emplacement
(MAX OWNER CABIN TV SIZE: 50"
MAX VIP CABIN TV SIZE: 32")



Air draft light load
Draught full load



Air draft light load
Draught full load

PERFORMANCES



CUMMINS QSB6.7 2X550 HP DIESEL

Caractéristiques / Specifications:

HEL 5 27,5 x19,5 (700x550)

Déplacement total du bateau testé / Total displacement of boat tested: 30500 kg

Regime en tours par minute au tableau de bord / RPM on instrument panel	Vitesse en nœuds moyenne au radar / Average speed on the radar in knots	Consommation totale en litres par heure / Total consumption in liter an hour	Rendement / Efficiency (NM/L)	Autonomie en NM (avec réserve 10%) /Range in NM (with 10% fuel supply)
600	3,05 Nds	2,80 L	1,09 NM	3372 NM
800	4,30 Nds	4,70 L	0,91 NM	2833 NM
1000	5,40 Nds	6,50 L	0,83 NM	2572 NM
1200	6,45 Nds	12,90 L	0,50 NM	1548 NM
1400	7,20 Nds	18,30 L	0,39 NM	1218 NM
1600	8,05 Nds	27,60 L	0,29 NM	903 NM
1800	8,90 Nds	39,20 L	0,23 NM	703 NM
2000	9,50 Nds	54,70 L	0,17 NM	538 NM
2200	10,20 Nds	72,10 L	0,14 NM	438 NM
2400	10,80 Nds	87,60 L	0,12 NM	382 NM
2600	11,70 Nds	111,60 L	0,10 NM	325 NM
2800	12,75 Nds	131,00 L	0,10 NM	301 NM
3000	14,65 Nds	162,60 L	0,09 NM	279 NM
3200	15,85 Nds	195,00 L	0,08 NM	252 NM
3300	16,85 Nds	210,40 L	0,08 NM	248 NM
max 3340/3330	17,25 Nds	212,70 L	0,08 NM	251 NM

Conditions optimales théoriques et purement indicatives des essais; /Optimal theoretical conditions, purely indicative for trials :

Mer plate - sans vent / Flat sea - without wind

juin-24



CUMMINS QSB6.7 2X550 HP DIESEL

Caractéristiques / Specifications:

HEL 5 27,5 x19,5 (700x550)

Boat with Sleipner Vector Fins Gen 3

Déplacement total du bateau testé / Total displacement of boat tested: 30500 kg

Regime en tours par minute au tableau de bord / RPM on instrument panel	Vitesse en nœuds moyenne au radar / Average speed on the radar in knots	Consommation totale en litres par heure / Total consumption in liter an hour	Rendement / Efficiency (NWL)	Autonomie en NM (avec réserve 10%) /Range in NM (with 10% fuel supply)
600	3,00 Nds	2,60 L	1,15 NM	3572 NM
800	4,35 Nds	5 L	0,87 NM	2694 NM
1000	5,40 Nds	7,90 L	0,68 NM	2116 NM
1200	6,40 Nds	14,40 L	0,44 NM	1376 NM
1400	7,35 Nds	19,80 L	0,37 NM	1149 NM
1600	8,10 Nds	27,50 L	0,29 NM	912 NM
1800	9,00 Nds	40 L	0,23 NM	697 NM
2000	9,60 Nds	56,50 L	0,17 NM	526 NM
2200	10,25 Nds	72 L	0,14 NM	441 NM
2400	11,00 Nds	88,50 L	0,12 NM	385 NM
2600	11,80 Nds	113 L	0,10 NM	323 NM
2800	13,20 Nds	137 L	0,10 NM	298 NM
3000	14,90 Nds	166 L	0,09 NM	278 NM
3200	16,30 Nds	195 L	0,08 NM	259 NM
3300	16,90 Nds	210 L	0,08 NM	249 NM
max 3340/3330	17,50 Nds	220 L	0,08 NM	246 NM

Conditions optimales théoriques et purement indicatives des essais; /Optimal theoretical conditions, purely indicative for trials :

Mer plate - sans vent / Flat sea - without wind

juin-24